



# INSTRUCTION MANUAL UNI CONTROL



## **SAFETY AND PROPER USAGE**

To ensure safe and enduring performance of this product, you must comply strictly with the instructions enclosed herein. Non-compliance with instructions or improper handling of the product will void your warranty! Usage of this product in conditions not specified in this manual or in contrary to the instructions hereby provided is considered IMPROPER. The manufacturer will not be held liable for any damages resulting from improper use of the product.

## **SAFETY & WARNING INSTRUCTIONS**

- Observe valid and generally accepted safety rules when planning, installing and using this product.
- Take proper measures to prevent unintentional operation of the product or damage to it.
- Do not attempt to disassemble this product or lines in the system while they are under pressure.
- Always depressurise the compressed air system before working on the system.

It is important that personnel use safe working practices and observe all regulations and legal requirements for safety when operating this product. When handling, operating or carrying out maintenance on this product, personnel must employ safe engineering practices and observe all local health & safety requirements & regulations. International users refer to regulations that prevail within the country of installation. Most accidents, which occur during the operation and maintenance of machinery, are the result of failure to observe basic safety rules or precautions. An accident can often be avoided by recognising a situation that is potentially dangerous. Improper operation or maintenance of this product could be dangerous and result in an accident causing injury or death. The manufacturer cannot anticipate every possible circumstance, which may represent a potential hazard. The WARNINGS in this manual cover the most common potential hazards and are therefore not all-inclusive. If the user employs an operating procedure, an item of equipment or a method of working which is not specifically recommended by the manufacturer he must ensure that the product will not be damaged or made unsafe and that there is no risk to persons or property.

## **NEVER CHANGE ORIGINAL COMPONENTS WITH ALTERNATIVES**

## **INSTALLATION INSTRUCTIONS**

*Before installing this product, make sure it complies with your request and that it suits your application!*

---

1.1 Unpack the timer and visually inspect for any transport damage incurred after leaving our factory.

---

1.2 Depressurise the system and shut off the power supply before installation or maintenance is carried out!

---

1.3 Remove the gasket and place it over the coil connection pins.

*- Make sure there is no debris between the gasket and the coil!*

---

1.4 Mount the timer on to the coil as illustrated, you can mount the timer up-right or upside-down.

---

1.5 Connect your power supply as illustrated.

---

1.6 Place the connector gasket on the connector, place the connector on the timer as illustrated and tighten the screw (max. torque 1Nm).

*- Make sure both gaskets are secured properly to ensure IP65 rating.*

---

1.7 After double checking that the power supply corresponds with the voltage specified on the coil and falls within the range specified on the back of the timer, you can switch the power supply ON.

---

1.8 Slowly restore normal system pressure. Press the TEST button to check the valve function.

---

1.9 You can adjust the ON and OFF cycle times to suit your system (see pages 6 & 7) - *Your timer is now ready for operation!*

*Note: We advise to check this product at least once a year and replace serviceable parts when necessary.*

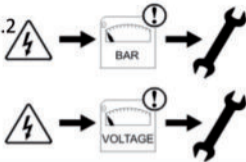
*Note: (If applicable!) Clean the strainer periodically to avoid possible blocking causes by rust and/or debris.*

*Note: Check the valve function periodically. A purging sound must be heard.*

1.1



1.2



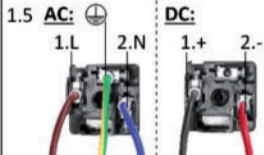
1.3



1.4



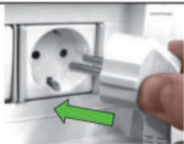
1.5



1.6



1.7



1.8



1.9





## TIME SETTING OPTIONS

The ON and OFF time of the timer can be programmed anywhere between 10ms and 99h.

The programmed time will be indicated by the LED display.



3 Hours



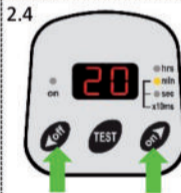
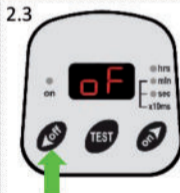
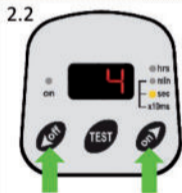
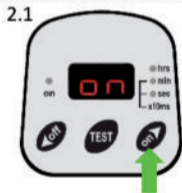
3 Minutes



3 Seconds



30 Milliseconds



## TIME SETTING OPTIONS

---

2.1 To change the ON time, press the right 'on/arrow up' button and 'ON' will appear briefly on the display.

---

2.2 You can now press the left 'off/arrow down' button for decreasing the time or the right 'on/arrow up' button to increase the time.

---

When the desired ON time is set, don't press any buttons. After a few seconds the display will start flashing, indicating that the new time is being saved. Once the new time is saved, the timer will start operating with the new time setting.

---

2.3 To change the OFF time, press the left 'off/arrow down' button and 'OF' will appear briefly on the display.

---

2.4 You can now press the left 'off/arrow down' button for decreasing the time or the right 'on/arrow up' button to increase the time.

---

When the desired OFF time is set, don't press any buttons. After a few seconds the display will start flashing, indicating that the new time is being saved. Once the new time is saved, the timer will start operating with the new time setting.

---

The timer is now programmed to your desired time settings and will work fully automatically.

## CHANGING THE TIMER FUNCTION

- Function 'A' - start with the ON time and then the OFF time, etc.
- Function 'C' - start with the OFF time and then the ON time, etc.
- Function 'B' - single shot, starts with the ON time and then switches OFF indefinite.
- Function 'D' - single shot, starts with the OFF time and then switches ON indefinite.
- Function 'E' - start with ON time then OFF time and then switches ON indefinite.
- Function 'F' - start with OFF time then ON time and then switches OFF indefinite.

*THE TIMER IS FACTORY SET TO FUNCTION 'A'. FOLLOW THESE STEPS TO CHANGE THE TIMER FUNCTION:*

1. Disconnect the unit from the power supply.
2. Press and hold down the 'TEST' button and connect the unit to the power supply.
3. Release the 'TEST' button after the current timer function appears on the display (A/ B/ C/ D/ E or F).
4. Use 'off/arrow down' and 'on/arrow up' buttons to select the function (A/ B/ C/ D/ E or F).
5. When the function is selected do not press anything, after a few seconds the unit will resume operation with the new function setting.
6. Change the pre-set ON and/or OFF times if required (see pages 6-7).

### *RETURNING TO THE FACTORY SETTINGS*

Factory settings of the timer: 3 seconds ON time, 30 minutes OFF time, function 'A'.

No matter how you change the settings you can always reset all settings to factory settings.

To do so please follow these easy steps:

1. Disconnect the unit from the power supply.
2. Press and hold down 'off/arrow down' and 'TEST' buttons, connect the unit to the power supply.
3. Release the buttons after 'P' appears on the display.
4. When 'A' appears on the display, do not press anything.
5. After a few seconds the unit will resume operation with factory settings.



## TECHNICAL SPECIFICATIONS

Supply voltage options	10 - 48VAC/DC, 48 - 110VAC/DC, 110 - 240VAC/DC 50/60Hz.
Max. switching current (power)	Do not exceed 1A (or 20W)
Ambient temperature	1 - 55 °C
Time cycle range (ON / OFF)	0,01 seconds to 99 hours (both ON and OFF)
PCB manufacturing design	SMT
Timer cycle indication	Bright LED illumination, clear LED display
Housing material	ABS plastic FR grade
Colour	Black
Test feature	Yes
Power connection	DIN 43650-A, ISO 4400
Environmental protection	IP65 (NEMA4)

## DIMENSIONS (mm)

